

# THE Marketplace



**MARKET SQUARE**  
Presbyterian Church  
*A Beacon of Hope on the Square*

MAY 2026 | 717.257.1270 | [marketsquarechurch.org](http://marketsquarechurch.org)

Easter is not just a day, it is a season. This year it runs until May 24 on the day of Pentecost. Having followed Jesus through the wilderness during Lent, entered through the triumphant entrance into Jerusalem on Palm Sunday, and finally descended with him to the depths of Golgotha on Good Friday, during this season we now rise up with Jesus in resurrection power! He is risen!

The nature of the church calendar is cyclical: it follows the seasons and reflects its roots in a largely agrarian society. It also reflects the cyclical nature of our own spiritual growth. Sacred time transcends the linear. We grow in God's time, not our own.

The cyclical nature of spiritual growth is not so much an endless loop, trapped in a closed orbit, as a spiral, with each circuit representing a deepening of experience. The season of Easter comes every year, but we are not the same every year. Our circumstances change, our time of life changes—and with these changes come an ever more complete saturation of our inner lives with the living water of God's love, that there might be no experience within us untouched by the baptismal waters.

This Eastertide is happening at a particular time in our collective history and in our own individual stage of life. Where are you spiritually today? How do you experience renewal in



**Rev. Stanley Jenkins**  
Pastor, Head of Staff

your own life? Are you in sync with the church calendar? It's quite possible to be spiritually in Ordinary Time when the actual season is Eastertide.

Please know that wherever you are in your own spiritual journey, you are not alone. Whether you are spiritually in Ordinary Time, Lent, Eastertide, Advent or Christmas, God is with you—and the community of the faithful walks along side you as well.

#### *In the words of the Psalmist:*

"You who live in the shelter of the Most High,  
who abide in the shadow of the Almighty,  
will say to the Lord, 'My refuge and my fortress;  
my God, in whom I trust.'  
For he will deliver you from the snare of the hunter  
and from the deadly pestilence;  
he will cover you with his pinions,  
and under his wings you will find refuge;  
his faithfulness is a shield and defense.  
You will not fear the terror of the night  
or the arrow that flies by day  
or the pestilence that stalks in darkness  
or the destruction that wastes at noonday."

**Please mark your calendars** for a special weekend visit from the **Reverend Ellie Johns-Kelley**, our Ministry Relations Officer from the Presbyterian Foundation.



#### **Friday, May 29 — Dinner**

Our Investment Committee will host a dinner at 6:00 p.m. to which you are warmly invited (location to be determined). Please RSVP to John Dame [jd@johndame.com](mailto:jd@johndame.com) by Monday, May 25, if you would like to attend.

#### **Sunday, May 31 — 11 am Worship & Lunch-N-Learn**

Rev. Johns-Kelley will preach during the 11:00 AM worship service, followed by a Lunch-N-Learn in Geneva Hall: "Legacy for All Ages." During our time together we'll explore how to discern your legacy, how to share that message with your church and those you love, and how to make a planned gift that extends your ministry here beyond your lifetime.

Watch the May bulletins and *Beacon Lights* for more details. We hope you'll join us for one or both of these meaningful occasions. **See page 12 for more information.**



## Adult Forum in May

4th Floor Adult Education Room  
9:30 a.m. Every Sunday in May  
except for the last Sunday, May 31.

### Why Christians Fight about Politics and What Can Be Done about It

**Rev. Allison Smith**  
*Supply Associate Pastor*

This May we are excited to welcome back Dr. Lee Barrett from Lancaster Theological Seminary for a month long class called “Why Christians Fight about Politics and What Can Be Done about It”. Many of us have experienced deep distress when confronted with the confounding political and religious views of those closest to us. It can be difficult to know how to show love and care for the ones we care about while also remaining true to our convictions. If that sounds familiar to you, this would be a great series of classes to attend. Dr. Barrett describes the class as follows:

It is no secret that Christians in the United States are deeply divided about political matters. Often the disagreements become bitter and explosive, splitting families and congregations. When disagreements are that deep and rancorous, religious convictions about the meaning of life usually play an unconscious role. We will consider the spiritual roots of these fractures, attempting to be fair to each faction.

We will explore possible strategies for fostering mutual understanding and promoting a more fruitful conversation. Lee C. Barrett is the Henry and Mary Stager Professor of Theology at Lancaster Theological Seminary. Before this he taught at what is now Union Presbyterian Seminary in Richmond. He is the author of several books and articles on the thought of Søren Kierkegaard and also on Reformed theology and popular culture. In his spare time Lee enjoys oil painting.



## NEXT CHILDREN’S PRAYER BREAKFAST: SUNDAY, MAY 10

## STEWARDSHIP

YTD Pledge.....	\$150,820
YTD Budget.....	\$125,000
Surplus.....	\$ 25,820

*Thank You for Your Faithful Giving*

We are truly grateful for the generosity and faithfulness of our church family. As of March, your giving has brought our **year-to-date pledges to \$150,820, exceeding our budget of \$125,000 by \$25,820.** We praise God for this wonderful blessing!

Each gift represents a heart willing to support the ministry and mission of our church. Whether large or small, every pledge makes a difference and helps us continue the work God has called us to do.

Thank you for partnering so faithfully with us. **Please continue the amazing support** as we move forward together, trusting God and serving our community with grateful hearts.

**Michelle Sheaffer**, *Financial Administrator MSPC*

## Thanks to our volunteers!

As we begin the last month of our program year, I want to take a moment to celebrate the dedicated volunteers that make our children’s Christian Education program possible. Every week there is at least one volunteer helping out in the nursery with the children under 5 and two volunteers who teach a lesson to the children in grades K-5. They give of their time, their energy, their creativity and their compassion to help nurture a new generation of Christians here at Market Square. Thank you for sharing your gifts!

### Education Volunteers

- |                 |                 |
|-----------------|-----------------|
| Keith Camilli   | Ashley Robinson |
| Trudy Mumper    | Karen Blashford |
| Rhiannon Dame   | Cindy Bendroth  |
| Theresa Elliott | Jodie White     |
| Ed Allgood      | Wendy Shearer   |
| Caleb Stelle    | Janet Kunkel    |
| Susan Hoover    | Phyllis Mooney  |
| Kristin Cassell | Gail Laninga    |

## Share the Love!

Don’t forget to “Like” Market Square on Facebook and Instagram! There you’ll find lots of updates on church events and happenings, as well as clips from worship services, inspiring quotes, and the occasional bit of hilarity. :)



## Worship Schedule for May 2026

### May 3: Fifth Sunday After Easter

- 9:30 am Korean Language Worship in the Davis Chapel  
The Reverend Ki Nam Lee preaching
- 11:00 am English Language Worship in the Sanctuary  
The Reverend Stanley J. Jenkins preaching  
Sacrament of Holy Communion

### May 10: Sixth Sunday After Easter

- 9:30 am Korean Language Worship in the Davis Chapel  
The Reverend Ki Nam Lee preaching
- 11:00 am English Language Worship in the Sanctuary  
The Reverend Stanley J. Jenkins preaching

### May 17: Seventh Sunday After Easter

- 9:30 am Korean Language Worship in the Davis Chapel  
The Reverend Nam Gil Roh preaching
- 11:00 am English Language Worship in the Sanctuary  
The Reverend Allison R. Smith preaching

### May 24: Day of Pentecost

- 9:30 am Korean Language Worship in the Davis Chapel  
The Reverend Ki Nam Lee preaching
- 11:00 am English Language Worship in the Sanctuary  
Reception of New Members and Recognition  
of Graduates  
The Reverend Stanley J. Jenkins preaching

### May 31: Trinity Sunday

- 9:30 am Korean Language Worship in the Davis Chapel  
The Reverend Ki Nam Lee preaching
- 11:00 am English Language Worship in the Sanctuary  
The Reverend Stanley J. Jenkins preaching



## Next New Members Classes

Whether you've been attending for a while or are just exploring, we'd love to have you join us for our new member classes. No commitment required!

Classes meet on three Sunday afternoons: **April 26, May 3, and May 17** at 12:30 p.m., right after the 11:00 a.m. service, in the 3rd floor conference room. A light lunch will be provided.

Over the three sessions, we'll explore what it means to be a Christian, a Presbyterian, and part of this congregation. Come for one, come for all!

Those ready to join officially will be received by the Session on May 24 at 10:30 a.m., with new members recognized at the 11:00 a.m. service, but there's no pressure. Speak with one of the pastors to learn more!

## RFIW: Join Us On May 3

Join Pastor Anne Ross and Elizabeth Terry at 10:00 a.m. on May 3 for 30 minutes of prayer and meditation to center your spirit before worship.



The Room for the Inner Way on the 4th floor of the church.

## Our Church Family

The Kerns boys had reason to celebrate this past month: **Vaughan** was honored as an All Star Student at a Senators game and **Jameson** received a Golden Ticket Integrity Award from Middle Paxton Elementary. The boys are the sons of Matt and Steph Kerns and great-grandchildren of Dottie and Bob Hotchkiss.

**Scott Tornblom's** memorial service will take place on Saturday, May 9, at 11:00 am.

Choir member Ken Bateman shares the joy of his son **Adam's** college decision: after much deliberation, Adam will attend DePaul University in Chicago this fall. Ken is incredibly proud of the young man Adam is becoming and is grateful for the prayers and support of his church family in the months ahead.

Longtime visitor **Daniel Graham** died on March 22 at the age of 86.

Congratulations to **Bob Garrett**, who has finally retired from the Greater Susquehanna Valley Chamber of Commerce. Bob will unofficially continue his duties as landscaper, maintenance guy, and chief window washer of the Susquehanna Art Museum. :)

Congratulations to our custodian, **Daemeaon!** He has moved from Susquehanna Harbor Safe Haven into his own room at the YMCA.

# Music Notes

Dear friends,

Happy spring! I have truly enjoyed the recent stretch of sunny days and warmer weather – it has been a welcome change. We also experienced a meaningful and uplifting Easter season at the church. I would like to extend my sincere thanks to all of our volunteers and musicians whose dedication made Holy Week and Easter such a moving and spiritually enriching time.

I am delighted by my recent title change to Minister of Music and Worship. It is a privilege to serve alongside such an exceptional staff team here at Market Square, and working together is truly a joy. Planning weekly Sunday worship with Allsion and Stan is always a pleasure – we collaborate well and consistently bring out the best in one another. I am grateful to continue serving Market Square in this role, as worship plays such a vital role in our lives and spiritual journeys.

As we approach the final month before our ensembles begin their summer break, we have a full schedule of wonderful music to share. On May 3, we will welcome international concert artist (and superstar!) Isabelle Demers. She will be in town for the AOTS concert (see below) and will also join us that Sunday in worship. During the service, we will recognize our outstanding Choral Scholars, four of whom are graduating.

On May 10 (Happy Mother's Day!), the Market Square Ringers will ring in worship before their summer holiday. Pentecost is on Sunday, May 24, and we have some neat music planned, and then the Sanctuary Choir will finish their season on May 31 which is Trinity Sunday.

Our final Arts on the Square concert of the season will take place on Sunday, May 3, at 4:00 p.m. Titled, **French Choral Masterworks**, this program invites you on a musical journey to France, featuring the Sanctuary Choir in two extraordinary

works: Maurice Duruflé's *Requiem*, Op. 9 (1947) and Louis Vierne's *Messe Solennelle in C-sharp minor*, Op. 16 (1899). The choir will be accompanied by Isabelle Demers, whose artistry will add to the richness of this performance.



**Tyler Canonico-Dilley**  
Minister of Music & Worship

These remarkable choral masterworks offer both beauty and depth, and I am eager for you to experience them. I hope you will join us to support our talented choir and be spiritually uplifted through this inspiring concert.

Peace and love,  
**Tyler**

## Sanctuary Choir Repertoire for May:

May 3 (Fifth Sunday after Easter) – Ralph Vaughan Williams' "O How Amiable" and "Antiphon" from *Five Mystical Songs*

May 10 (6th Sunday after Easter) – "Jubilate Deo" by Peter Anglea and "If You Love Me" by Thomas Tallis

May 17 (7th Sunday after Easter) – "Lift Up Your Heads, O Ye Gates" by William Mathias and "Draw Us in the Spirit's Tether" by Harold Friedell

May 24 (Pentecost) – "Come Down, O Love Divine" by William Harris and "Ev'ry Time I Feel the Spirit" by William Dawson

May 31 (Trinity Sunday) – "Te Deum" by John Ireland" and "O Thou, the Central Orb" by Charles Wood

## WE NEED OUR TEETH!

PUT PEOPLE FIRST! PA  
**CROWD THE CAPITOL**  
FOR DENTAL DAY OF ADVOCACY

Scan here to register!  
[bit.ly/CrowdTheCapitolPPF](https://bit.ly/CrowdTheCapitolPPF)

Members are invited to join Put People First! PA for the "Crowd the Capitol" event. This initiative urges the PA Senate to pass SB 860, which would restore the Adult Dental Benefit in Medicaid and eliminate the Benefit Limit Exception (BLE). While the House has already passed this legislation, your support is now needed to encourage Senate

Put People First! PA is the only statewide, member-led, staff-free organization in Pennsylvania that is led by people who are on or excluded from Medicaid.

Interested participants can register and view the full platform at the following link: <https://bit.ly/CrowdTheCapitolPPF>.

Come and lend your support to PPF-PA during the rally and press conference at 12:30 pm. Let's help them to "Crowd the Capitol" and restore dental benefits for those on Medicaid.

**Judi Shepler**

Sunday, May 3 – 4:00 p.m.

# FRENCH CHORAL MASTERWORKS



Requiem, Op.9 by Maurice Duruflé  
Messe Solennelle in C# minor, Op. 19 by Louis Vierne

The Sanctuary Choir of Market Square Church  
Tyler Canonico-Dilley, *conductor*  
Isabelle Demers, *principal organist*

Market Square Presbyterian Church  
20 S. 2nd Street, Harrisburg PA

Suggested donation \$15  
*Complimentary parking in the adjacent Market Square Garage*



The Sanctuary Choir



Tyler Canonico-Dilley



Isabelle Demers

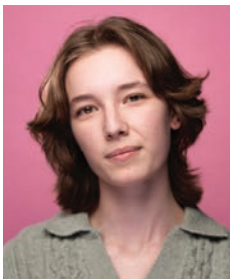
[artsonthesquare.net](http://artsonthesquare.net)



## 2025-2026 Choral Scholars at Market Square



**Taran Bellows** is a first-year music education and vocal performance major at Lebanon Valley College. He is heavily involved in theater and plans to continue working in this area in the future. Taran has been an active choral singer and is thankful for this opportunity to work with such an amazing and welcoming group.



**Elsbeth Hunter** is a junior music education and vocal performance double major with a minor in musical theatre at Lebanon Valley College. She is an avid creative, taking part in everything from knitting to painting to directing musicals. She has also been performing in church since age five and is grateful for the opportunity to sing with the Market Square Sanctuary Choir.



**Owen Kreider** is a first-year music education student at Lebanon Valley College as a vocal primary. He is involved in cross country, track, musical theatre, and choirs at the Valley. Owen is thrilled to have this opportunity to sing in the Sanctuary Choir at Market Square.



**Eden Marcott** is a first-year music education major and musical theater minor at Lebanon Valley College. She has been an active choral singer and is excited about her first year Choral Scholar position at Market Square. She has been in 26 theater productions, with her most recent role as *Carrie* in the musical *Carrie* through the LVC music theater company.



**Anne McIlvaine** is an emerging mezzo-soprano from Lancaster, Pennsylvania. Anne is currently finishing her degree in music education with her student teaching placement at Cedar Cliff High School. She has been featured as a soloist in Mozart's *Requiem* with the Harrisburg Choral Society, and as a soloist in Haydn's *Creation*, Bach's *St. John Passion* and Buxtehude's *Membra*

*Jesu Nostri* at Messiah University. Recent opera credits include Meg Page in *Falstaff* (English) at Harrower Summer Opera, and scenes of Dinah in *Trouble in Tahiti* and Ma Moss in *The Tender Land* (MU Opera). She plans to complete a graduation degree in vocal performance following the completion of her undergraduate degree in 2026. Soli Deo Gloria.



**Tristan Metherell** is a sophomore at Lebanon Valley College and is studying audio and music production, with a voice primary, and specializations in honors and applied French. Outside of studying, Tristan can usually be found writing poetry, playing guitar, or petting a dog. This is his second year as a Choral Scholar and loves getting to make beautiful music with people from diverse backgrounds.



**Daniel Micsion** is a Senior music education student at Messiah University as a vocal primary. At Messiah, Dan is involved in the Concert Choir, Chamber Singers, and the Opera Department. He's been a part of the Sanctuary Choir as a Choral Scholar for the past four years. He cannot begin to express the gratitude he has for this program and

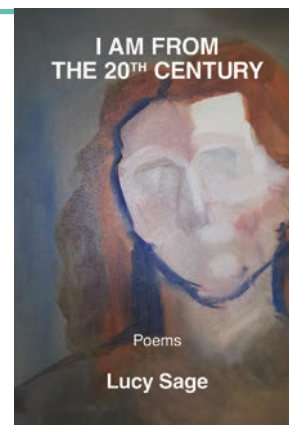
the members of the choir who have welcomed him in and supported him these past four years. Dan said he has felt at home here at Market Square because of the individuals in the choir and congregation.

## Community Poetry in Harrisburg

Please join me for a poetry reading on May 24 at 2:00 p.m. in Geneva Hall that's open to the public. I am trying to start a Community Poetry Group in Harrisburg and I created a Facebook group—**Midtown Harrisburg Community Poetry**—with more information. I am planning on promoting it at open mics and a poetry conference, and with local school districts and colleges.

I recently published my first book on poetry. There is a bio at the end of it. There are 27 poems, some of which are about St Petersburg, Florida, where we lived for over eight years, and some are about Pennsylvania. The book can be purchased on Amazon or Kelsay Books ([kelsaybooks.com](http://kelsaybooks.com)).

**Georgia Earp**



## Choral Scholars (cont'd)



**Kate Newsted** is a first-year music education major at Lebanon Valley College. She is heavily involved in LVC's musical theatre program and a proud member of the honors college. Kate has participated in many choirs and shows over her career. She is very grateful for the opportunity to be a Market Square Choral Scholar!



**Dekenon Pollock** is a sophomore general music major at Messiah University. He is a member of the Concert Choir and Chamber Singers. This is his first year in the Sanctuary Choir and says that he is "beyond excited for my next few years here at Market Square!"



**Bryant Rohrer** is a baritone from Duncannon, Pennsylvania. Bryant is a senior music education major with a concentration in voice at Messiah University, and this is his fourth year at Market Square. He is involved in Messiah's Concert Choir, Chamber Singers, and Symphonic Winds. He has also previously served as the vice president of Messiah's chapter of the

American Choral Directors Association. After graduation in May, Bryant plans to continue participating with Market Square's Music Ministry and will start looking for career opportunities and graduate studies in the Central Pennsylvania area.

### Session Activities: April 2026

by Cindy Bendroth, Clerk of Session

Market Square's Session is responsible for the church's mission, governance, and programs. Rev. Stan Jenkins moderates the Session. Current Ruling Elders may serve up to two consecutive, three-year terms.

#### Baptism

Session approved the baptism of James Morgan Smith on June 7. James is the son of Pastor Allison and Conrad Smith.

#### Poetry Reading

Session approved Georgia Earp's use of the church facilities for a poetry reading from her newly published book on Saturday, May 23, at 2:00 p.m. in Geneva Hall, and the sale of copies.

#### Finances

Session approved to accept designated contributions from members earmarked for Bethel AME, shortly before Easter, Bethel AME was vandalized; copper pipes and wiring were stolen, leaving the congregation unable to use their building for Easter services. The Peacemaking Committee has allocated funds from two budget line items toward recovery support and is encouraging broader congregational participation.

Session authorized a donation of \$99.60 to the national Pentecost offering to the Presbyterian Church USA to benefit ministries with youth and young adults, and child advocacy/children at risk. The PCUSA contacted Market Square because a member (or members) gave their Pentecost Offering directly to the PCUSA, rather than Market Square. PCUSA wrote to us asking if we wanted these funds sent to us so that we could use them for the local portion of last year's Pentecost offering, or whether we would like those funds to be used at the national level.

Session approved the receipt of offerings from St. Stephen's Episcopal Church to use for MSPC medical clinic held on Sunday mornings.



We're starting this year's stewardship campaign very early with two simple but profound questions: **Why does Market Square Presbyterian Church exist?** And: **What would our city lose if we were gone?**

Our life together has always moved in two directions at once. We turn inward to cultivate our spirits — through worship, education, and community — and we turn outward to serve, bearing witness through work with our unsheltered neighbors, antiracism and ecology initiatives, peacemaking, the arts, and our Matthew 25 calling. Through our building, we also extend hospitality to the International Service Center, the United Way's tax assistance program, and a number of community organizations who rely on our space for their own vital work and outreach.

To help us reflect on all that this congregation is and does, members of our community will offer Minutes for Mission during worship in the coming months. Each brief witness will shine a light on one facet of our shared ministry. We hope you'll listen, reflect, and let these stories renew your sense of what your giving makes possible.

**Nancy Sheets**, Ministry Support Administrator

## Earth Care Congregation

Market Square's Ecology Action Committee has responsibility for maintaining our congregation's commitment to be an Earth Care Congregation, as certified by PC/USA. To maintain this certification, the EAC must submit a report to PC/USA each year stating what the congregation has done to support Earth Care in each of four areas of the church: worship, education, facilities, and outreach. Market Square has been an Earth Care Congregation since 2018.



This year the EAC developed Earth Care Guidelines to help every committee and staff member to be aware of the responsibilities which the church has committed to assume and to make a good faith effort to meet them. This may sometimes require the use of new ways of thinking and considering different ways of being. EAC members will be available to help and answer questions, as needs arise.

To better understand what Earth Care means, following is the first paragraph of the PC/USA Earth Care Pledge:

*Peace and justice is God's plan for all creation. The earth and all creation are God's. God calls us to be careful, humble stewards of this earth, and to protect and restore it for its own sake, and for the future use and enjoyment of the human family. As God offers all people the special gift of peace through Jesus Christ, and through Christ reconciles all to God, we are called to deal justly with one another and the earth.*

We ask each congregant to prayerfully consider how they impact the gift of Creation, and whether individually or as a church family, we might find ways to create a more supportive, loving relationship with our one and only home, EARTH.

## EARTH WISDOM

Reflecting on the intricate connections of biodiversity—a web that sustains us all - we see that it is not merely an environmental issue. It is a testament to Spirit's boundless creativity. Every species plays a vital role in the Earth's ecosystems. We have a shared commitment to preserve these connections. Each moment of awareness strengthens our connection to this vital web of existence. What action can I take to honor this life enhancing web?

**Dorothy Grimm**, Ecology Action Committee

## Wind Power and the President

President Donald Trump, speaking at the World Economic Forum this past winter, declared that China doesn't use wind power. "I haven't been able to find any wind farms in China. Did you ever think of that? It's a good way of looking. You know, they're smart. China is very smart. They make them. They sell for a fortune. They sell them to the stupid people that buy them, but they don't use them themselves."

This statement is patently false. As Climate activist and author, Bill McKibben points out in the April issue of *Sojourner* magazine, "China produced more than 40% of all the wind power on planet Earth last year." They keep building larger blades and have now invented one that is recyclable. China's coasts and ridges are dotted with vast wind farms, and it continues to reduce its CO2 emissions while US carbon production rose 2.4% last year, mostly because the Trump administration has encouraged the production and use of more coal.

In December of last year, the Trump administration ordered a halt to the building of five wind farms along the east coast which had each received federal permits and were in various stations of construction. The developers and several states sued and federal judges rules against the administration in every case finding no evidence of an alleged threat to national security.

In addition to saying that wind farms are ugly, President Trump claims, without evidence, that they are "driving whales crazy." Of course, depending upon one's point of view, the problem may not lie with the whales.

**Jim Terry**

## Good Works



As a volunteer, I am sitting with some of the International Service Center staff practicing speaking and writing English when a volunteer working with low income people on their taxes interrupts us. "I need someone who can help translate French." Immediately our Haitian staff person dismisses herself to help the tax assisting volunteer. Soon there is a request for Ukrainian translation from another tax volunteer. It is wonderful to see how ISC staff make time to help these tax volunteers from another community agency. Thanks to the host church, Market Square Presbyterian, The United Way uses their chapel and basement to offer free tax services Tuesdays in February and March. It is a joy to see how the work of these different faith and humanitarian agencies cooperate to help the vulnerable and struggling.

**Rev. Dr. Bruce Humphrey**

# Market Square Presbyterian Church

## Earth Care Congregation Guidelines

In its mission statement, Market Square Presbyterian Church pledges to work for justice, peace, and a sustainable environment. For the past 9 years, the Presbyterian Church (USA) has certified us as an Earth Care Congregation in recognition of environmental stewardship in the areas of **Worship, Education, Facilities and Outreach**. This notable achievement would not have been possible without the cooperation of Market Square members and staff.

To ensure that, as a congregation, we continue to faithfully adhere to this pledge, the Ecology Action Committee (EAC) has developed guidelines identifying priorities for planning our **worship services**, maintaining our **facilities**, **educating** our members, and **outreaching** to the greater community. EAC members stand ready to work with other church committees in building on our past success and demonstrating that Market Square is firmly committed to a clean, safe, and sustainable environment.

### Worship

- Focus worship services in April (Earth Day) and September (Season of Creation) on God's creation and the importance of its protection and preservation.
- Use native plants for chancel flowers for Earth Day and during September, and as an option throughout the year.
- Schedule an EAC Minute for Mission on the Sunday before April Earth Day service.
- Use Eco Palms for Palm Sunday services.
- Provide opportunities for outdoor worship and time in nature.

### Facilities

- Use highest recyclable content paper available for printed items when possible.
- Reduce the use of disposable products by using reusable plates, silverware, glasses, cups and tablecloths. Serve water either in pitchers or by having people bring their own drinks for meals, meetings, or other events.
- Conduct an energy audit of the church building and implement the recommendations, as possible.
- Place the mission statement at the front of the church visible to the general public.
- Use Fair Trade or Rainforest Alliance coffee. (supported by PC USA)
- Include vegetarian options at congregational meals.
- Continue using cleaners that are less toxic, those identified with EPA's Safer Choice label.
- As upgrades are made to HVAC and kitchen, transition to non-fossil fuel models.

- Continue to purchase electricity from green energy suppliers.
- Include native plants in front of the church.
- Recycle electronic equipment and batteries.
- Serve as a recycling drop-off for oral health products.

### Education

- Have an earth care component in new member and confirmation classes.
- Consider offering an art exhibit focused on Creation or Earth Care.
- Add additional information about the Five Senses and Pollinator gardens and our facilities sustainability on the EAC web page, as well as making it easier to find.
- Continue holding at least two adult forums yearly on the topic of earth care.
- Schedule a ride share or alternative transportation day for worship service.

### Outreach

- Support the development of peaceful outdoor spaces at the Five Senses Garden, the Pollinator Garden, and the Peace Garden.
- Support policies and legislation and organizations that advocate for a sustainable environment
- Inform members about earth care policies and legislation and urge members to express their opinions to policy makers and legislators in support of earth care.
- Engage the unhoused population in earth care.





Photo by Beth Hager.



## How I See It: Paintings and Portraits by Rodney Pate

Through Sunday, June 28, 2026

Arts on the Square Gallery opened a new exhibition at Market Square Presbyterian Church on April 26 featuring works by oil painter Rodney S. Pate.

“How I See It: Paintings and Portraits by Rodney Pate” will be on display through Sunday, June 28, in Market Square’s Geneva Hall gallery space on the 4th floor and in the 1st floor atrium adjacent to the sanctuary. In addition to Sunday mornings, the gallery spaces will be open for 30 minutes following Arts on the Square concerts.

Market Square member Robb Whitmoyer recommended Rodney for the Arts on the Square gallery. He had met him through Rodney’s husband, Steve McElrath, and was immediately impressed with his evocative paintings and thought they would be perfect for an exhibit at Market Square Church. Rodney paints a diverse range of subjects, frequently featuring portraits of both contemporary and historical figures.

“My art is mostly representational with some abstract elements included. I enjoy painting portraits, especially historical figures. Landscapes are a favorite as well, usually including saturated color with high and low values,” says Rodney. “I’d like to think that those who view my work will feel something that triggers a good feeling or pleasant memory. I try to do this by subject matter or dramatic use of color and composition.”

Rodney was a longtime resident of New Jersey before retiring and moving to Harrisburg in 2023. A Bachelor of Fine Arts graduate of New York’s Pratt Institute, he worked as a full-time graphic designer while illustrating picture books for children. During his career, Rodney found he did not have much time to focus on oil painting, especially on larger canvases. “Now that I am retired, I am excited to learn more about painting and exploring new subject matter,” reflects Rodney, “I enjoy practicing and learning all that I can about oil painting as well as viewing works by other artists.”

Arts on the Square Gallery presents three exhibits annually at Market Square Church to showcase creativity and artworks by church members, friends, and special guests. Receptions are hosted by Ashley and Joe Robinson. Beth Hager is the Exhibits Coordinator for Arts on the Square.

For info contact: **Beth Hager**, Arts on the Square Gallery Exhibits Coordinator, [bahager@earthlink.net](mailto:bahager@earthlink.net) [marketsquarechurch.org/gallery](http://marketsquarechurch.org/gallery)





*Clockwise, beginning with painting far left, page 10:*

- Andra Day as Billie, oil on canvas
- Steven Sidewalk, oil on canvas
- Angels, oil on canvas
- 41 Carteret, oil on canvas
- Jammer, oil on canvas





Dr. Rahul Shenoy (right) and his assistant Seandor Szeles (left), here for their monthly health screening for breakfast guests.

At Market Square Presbyterian Church, we believe caring for the whole person is part of what it means to love our neighbors. We're grateful to welcome Dr. Rahul Shenoy, who visits once a month on his own time, to offer free health screenings for our Sunday breakfast guests — people in our community who might not otherwise have access to medical care.

Dr. Shenoy provides physical exams, blood glucose checks, basic medical and mental health evaluations, preventive health and nutrition education, mental health counseling, and referrals to clinics and social services.

This is what Matthew 25 looks like in action. We give thanks for partners like Dr. Shenoy who share our commitment to showing up for those who need it most.

**Nancy Sheets, Ministry Support Administrator**

## Recognizing Our Graduates



Do you have a graduate in your life? We'd love to celebrate them! As we mark Pentecost Sunday on May 24, we will recognize members and friends of our congregation who are graduating from high school or undergraduate college this spring. Parents, grandparents, and friends are invited to share their graduate's name, school, and any other information you'd like us to have — future plans, updated addresses, email addresses, or anything else. **Please submit by May 17 to Nancy at [sheets@marketsquarechurch.org](mailto:sheets@marketsquarechurch.org).**

## Legacy for All Ages



Consider for a moment how blessed we have been by the faith lessons and resources of those who came before us. They lovingly shared their Christian faith with us in so many ways—through worship and prayer, Sunday School and service projects, being good stewards of our history and facility. Today, you and I are the beneficiaries and now the caretakers of all that has been entrusted to us. Now it's our turn to prepare our church for tomorrow, to tell our stories of faith and plan how we can pass on a meaningful faith to the next generations in our church.

How can you be a part of that blessing? Please join us for a luncheon and seminar, *Legacy for All Ages*, following worship on **Sunday, May 31, 2026 in Geneva Hall**. The Rev. Ellie Johns-Kelley, our Ministry Relations Officer at the Presbyterian Foundation, will lead this workshop.

During our time together, we will discuss:

- how to discern your legacy,
- how to share that message with our church and those you love, and
- how to make a planned gift to continue to your ministry here.

Our church has a long history of passing along a deep and abiding faith, a faith that is vibrant and hopeful and makes an impact in people's lives. We are planning now to equip future generations with faith like this. We'd like to invite you to join that tradition and consider the following: What is your lasting legacy of faith to the next generations in our church? Would you consider endowing your pledge with a gift to our endowment?

Please join us in exploring how we can continue to be the presence of Christ in the world through our church and even beyond our lifetimes. We look forward to talking with you about this further on May 31st and afterwards.



# AI DATA CENTERS ARE COMING

## WHAT ARE THE RISKS? WHAT CAN YOU DO?

Data centers have been around for years, but there's much more demand for them now due to:

- Artificial intelligence (AI)
- More and more 'cloud storage'
- Internet connections of thermostats, refrigerators, vacuums, etc.
- Software as a service, i.e. programs like Microsoft Office are online now

### COMMUNITY AND ENVIRONMENTAL CONCERNS

- Power consumption - impact on the electric grid, potential blackouts
- Loss of natural areas - animal habitat, trees, clear cutting, fences impacting animal movement
- Water consumption - require up to 5 million gallons daily for cooling
- Noise and vibration - potentially 90 decibels, as loud as heavy truck traffic
- Storm water runoff
- Chemical Emissions - fine particulate matter, nitrous oxides, volatile organic chemicals
- Use of AI will replace some human employment

**ZONING ORDINANCES** are the laws that control how property can be used – things like location, size, height, noise levels, water usage. These laws set the rules EVERYONE must follow, including people making decisions about whether to approve a project! Where do Zoning Ordinances come from?

- Governing Body – city council, borough council, board of supervisors, or board of commissioners. This group passes local laws like Zoning Ordinances.
- Planning Commission and Environmental Advisory Council – does not have the power to pass ordinances or approve applications / can only make recommendations / may be assigned to draft ordinances for the Governing Body's review.

**MODEL ORDINANCES** are templates or example ordinances that give Governing Bodies a starting point to work from as they draft their own ordinances. They have suggested language to help municipalities build their own zoning ordinances to control data center development and address environmental and community concerns related to them. Language like:

- Definitions of data center and related items

- Noise and vibration
- Building height
- Water Usage
- Setbacks
- Type of approval process
- Landscape buffers and equipment screening

**POWER USAGE, COST, WHO CAN CONNECT TO THE GRID**, etc. is controlled by state agencies like the PUC (Pennsylvania Utilities Commission)

### WHAT CAN YOU DO?

- Contact your Governing Body, Planning Commission or Environmental Advisory Council.
- Check out the Data Center Toolkit on PennFuture website.
- Attend borough, township, zoning meetings and participate in this discussion.
- Organize in your community - generate petitions, yard signs, hold community meetings.



- Acquaint yourself with PA Data Center Legislation – House Bill 2150, House Bill 2151, and House Bill 1260 – Then **CONTACT YOUR ELECTED REPRESENTATIVES**

**Debbie Olson** and **Judi Shepler** for EAC and Peacemaking Committees



*(Information from March 4 webinar “Act On Data Centers: How to protect your community before they come knocking” co-sponsored by PennFuture and Conservative Voters of PA [available on YouTube] and Put People First PA, March 18th Statewide call, “Artificial Intelligence (AI) and Data Centers”)*

Market Square Presbyterian Church  
20 South Second Street | Harrisburg, PA 17101  
ELECTRONIC SERVICE REQUESTED

Nonprofit Organization  
U.S. Postage  
**PAID**  
Harrisburg, PA  
Permit No. 273

- Stanley J. Jenkins**, Pastor, Head of Staff  
jenkins@marketsquarechurch.org
- Allison R. Smith**, Supply Associate Pastor  
smith@marketsquarechurch.org
- Ki Nam Lee**, Pastoral Associate for Korean Ministries  
kinlee21c@gmail.com
- Anne M. Ross**, Pastoral Assistant for Congregational Care  
amross0611@gmail.com
- James D. Brown**, Pastor Emeritus
- Jennifer McKenna**, Spiritual Director  
revjjm@gmail.com
- David Volkman**, Bridge Operations Manager  
volkman@marketsquarechurch.org
- Tyler A. Canonico-Dilley**, Minister of Music & Worship  
canonico@marketsquarechurch.org
- Ellen B. Hunt**, Minister of Music Emerita  
ellenhunt@ruthhunter.com
- Peter Yardley-Jones**, Artist-in-Residence  
email@peteryardleyjones.com
- Michelle Sheaffer**, Financial Administrator  
sheaffer@marketsquarechurch.org
- Nancy D. Sheets**, Ministry Support Administrator  
sheets@marketsquarechurch.org
- Sean Meara**, Facility Manager  
meara@marketsquarechurch.org
- Daemeaon Allen**, Custodian  
allen@marketsquarechurch.org
- Steve Jackson**, Parking/Events Staff
- Art Miles**, Community Breakfast Resource Person
- Ollie W. Silver**, Sunday Sexton/Events Staff  
ollie.silver@aol.com
- Sidney Dame**, Nursery Caregiver
- Newman Stare**, Audio Visual Technician  
nleeaudiotech@gmail.com
- Andrew Hunter**, Sound/Livestream Technician  
hunterandrew2314@gmail.com



Rodney Pate and his husband, Steven McElrath, hang his oil painting “Last Train from Bridgewater.” Photo by Beth Hager. Click on the QR code to hear an interview with Rodney about his work. Film by Beth Hager.

## Sunday Services

Korean Language Service—9:30 a.m.  
in the Davis Chapel.  
Sermons on YouTube  
(link on the church website’s  
Worship page).

English Language Service—11:00 a.m.  
in the Sanctuary.

The service is livestreamed  
on our YouTube channel  
<https://shorturl.at/xeBHi>

The button for the livestream is at the  
top of the homepage of our website.  
[marketsquarechurch.org](https://marketsquarechurch.org)



## OUR MISSION

To proclaim and live the Good News of Jesus Christ by welcoming friend and stranger alike into our diverse and inclusive family of faith regardless of race, class, national origin, sexual orientation, gender identity and expression, or worldly condition of any kind as we celebrate our gifts, work for justice, peace, and a sustainable environment, reach out in mission, and witness to God’s transforming love.